

# Co-commissioning of Primary Care

Expression of Interest

Submitted to NHSE on 20<sup>th</sup> June 2014

# Context

- NHSE wrote to all CCGs inviting expressions of interest (EOI) from CCGs to work more closely with NHSE and other CCGs in commissioning general practice.
- TH CCG submitted a formal EOI in collaboration with City and Hackney, Waltham Forest and Newham CCGs on 20<sup>th</sup> June with the aim of some implementation during 14/15 and more complete co-commissioning for 15/16
- WELC CCGs have agreed to work together to develop a model for co-commissioning activities with NHSE (both shared and independent), this development is integral to achievement of local CCG / Borough priorities and shared wider objectives such as 5 year strategic plans, Transforming Services Together (TST) and Integrated Care.
- TH has a number of initiatives in place that support co-commissioning but formal arrangements with partner commissioners will enable the full benefits of these developments to be realised – e.g.
  - NIS outcome based contract circa 7m through networks
  - TH multiagency estates group
  - Achieving Excellence in Primary Care Programme Board
  - Common IT platform



# Aims

- The aims of the WELC Co-commissioning EOI are:-
  - Improve the quality and outcomes of primary medical services
  - Provide strategic leadership to the development of primary care
  - Work in partnership with other NHS organisations to improve and modernise the primary care infrastructure



# EOI Outline

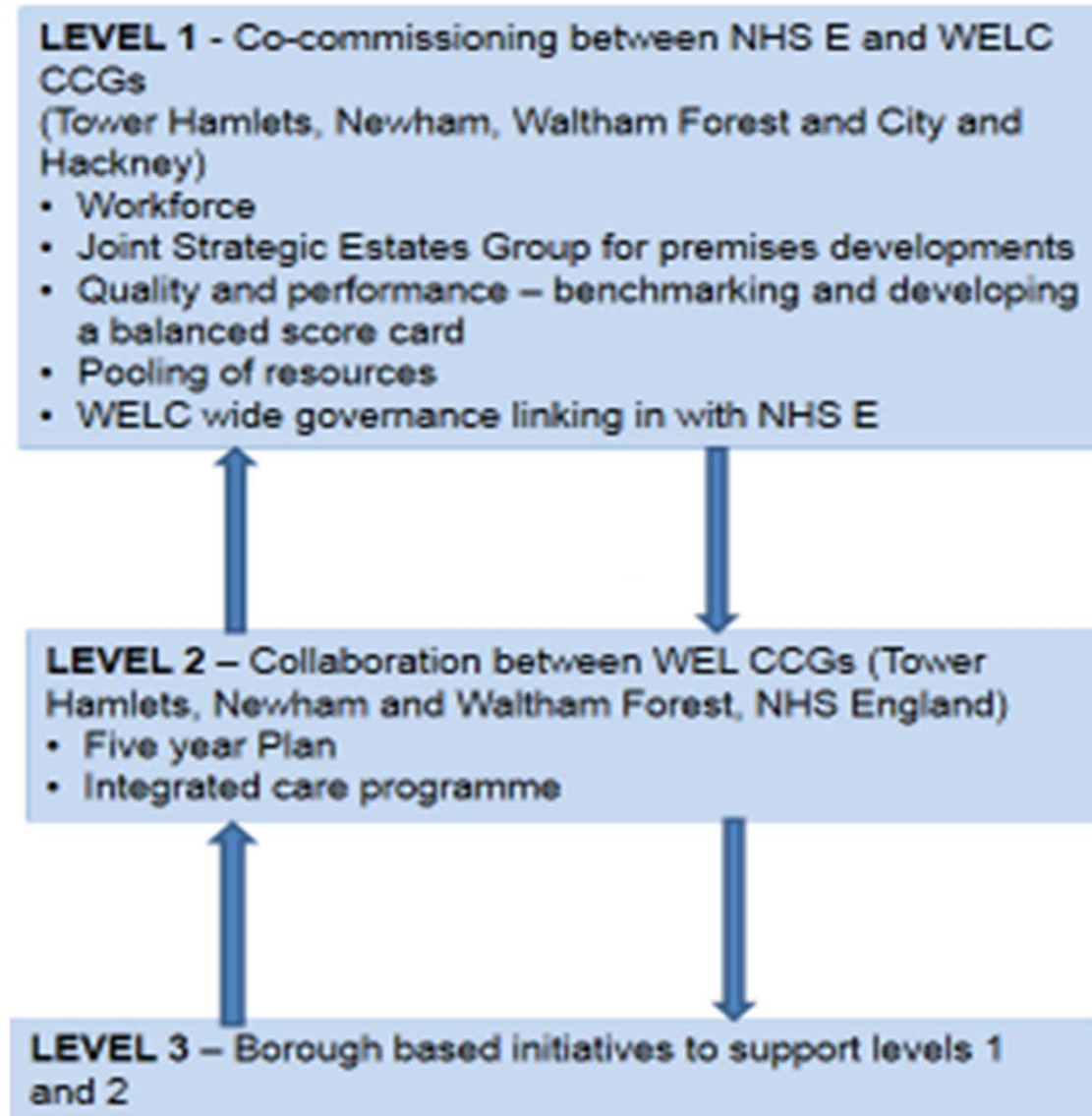
- The joint EOI from the 4 WELC CCG covers the following: -
  - Areas of strategic co-commissioning that the 4 CCGs wish to do together with NHSE
  - Proposed detailed collaborative arrangements for Newham ,Tower Hamlets and Waltham Forest that align to 5 year plan, TST and Integrated Care
  - City and Hackney CCG has submitted an additional EOI of proposed activities at Borough level
  - The current EOI describes a focus on general practice but in future inclusion of other contractors (pharmacy, dental and optometry) may be explored as collaborative models of delivery develop against the 3 priority areas of co-ordinated, proactive and accessible care



# Guiding Principles for Inclusion in Co-commissioning EOI

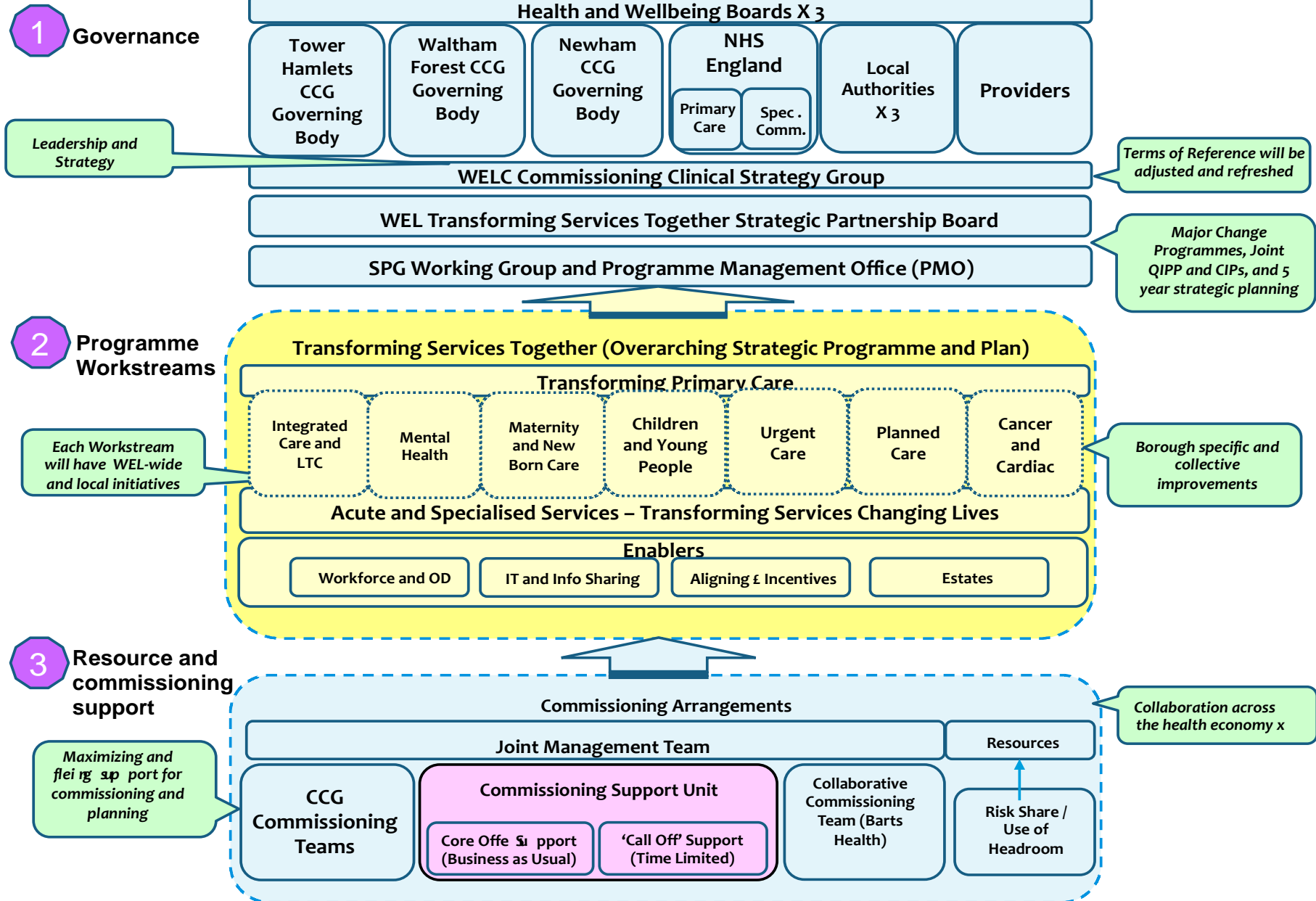
- There needs to be sufficient scale to justify the shift in commissioning
- There needs to be clarity on governance to ensure there are no conflicts of interest between parties
- The need to ensure consistency across London in the way Area Teams work with CCGs to design their expressions of interest
- The co-commissioning should be locally led, based on patient flows
- The approach should deliver benefits not achievable within the current operating framework
- The approach should maximise the opportunities to deliver the London Quality Standards

# Proposed Collaborative Arrangements



# Joint Decision Making and Accountability

## WEL CCGs Collaborative Governance Overview – TO BE FINALISED



# Intended Benefits

WELC CCGs Five Year Plan Objectives	
1	Improving additional years of life from conditions amenable to health care (PYLL per 100,000) by 3.2%
2	Improving the health related quality of life of those with 1+ long-term conditions by 0.37%
3	2.38% reduction in emergency admissions
4	Improving patient experience of hospital based care by 3%
5	Improving patient experience of general practice and GP out of hours services by 1% in 2014/15 increasing to 5% by 2017/18
6	Reducing the amount of time people spend avoidably in hospital through better and more integrated care in the community, outside hospital by 11%

- Improving the quality of services for patients
- Improving access and variability
- Strategic oversight of Primary Care
- Primary Care Infrastructure Transition



# Phasing 1

**Joint Commissioning of Primary Care, CCGs and NHS  
England  
November 2014**

**Strategic oversight of Primary Care and a lead role in  
investments and decision making**

**Joint Strategic Estates Development**

**Quality improvement through a benchmarking and audit  
approach**

**Workforce development and education**

# Phasing 2

**Phase 2 - Joint Commissioning of Primary Care, CCGs and NHS England**

**April 2015 (subject to gateway process and CCG Governing Body approval)**

**Pharmacy**

**Public Health Commissioning with Public Health England including vaccinations and screening and medicines use review.**

**Specific Primary care contracting functions**



# Next Steps

- Pause pending feedback from NHSE
- Convene a WELC primary care committee
- Convene a WELC Estate Development Group
- Development of a co-commissioning work programme
- Continue stakeholder engagement as co-commissioning plans develop
- Agree how staff will work together across the organisations
- Put in place monitoring and evaluation arrangements